
WHYSER 39 HYBRIDE

INHALT

Außenansicht	Seite 02 - 09
Außenansicht - Details	Seite 10 - 18
Innenräume	Seite 19 - 31
Technik	Seite 32 - 49
Sonstiges	Seite 50 - 53
Kontakt	Seite 54







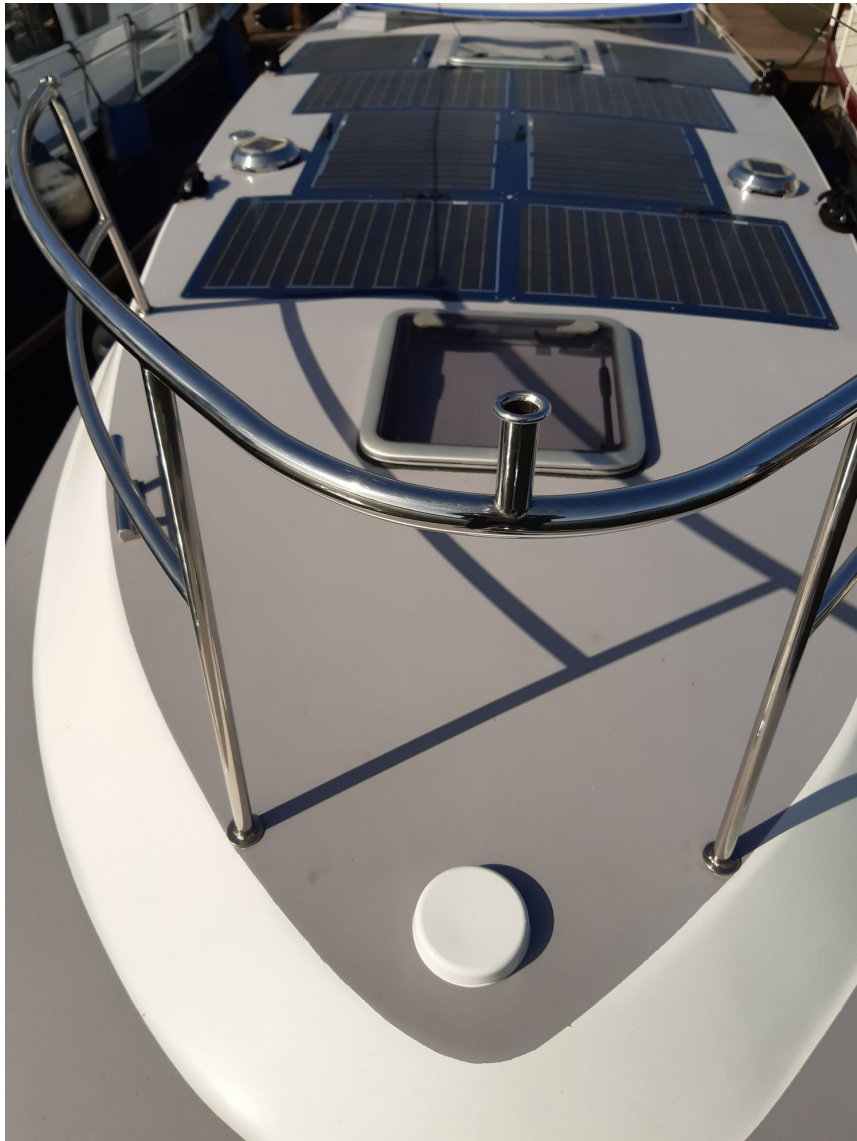




















































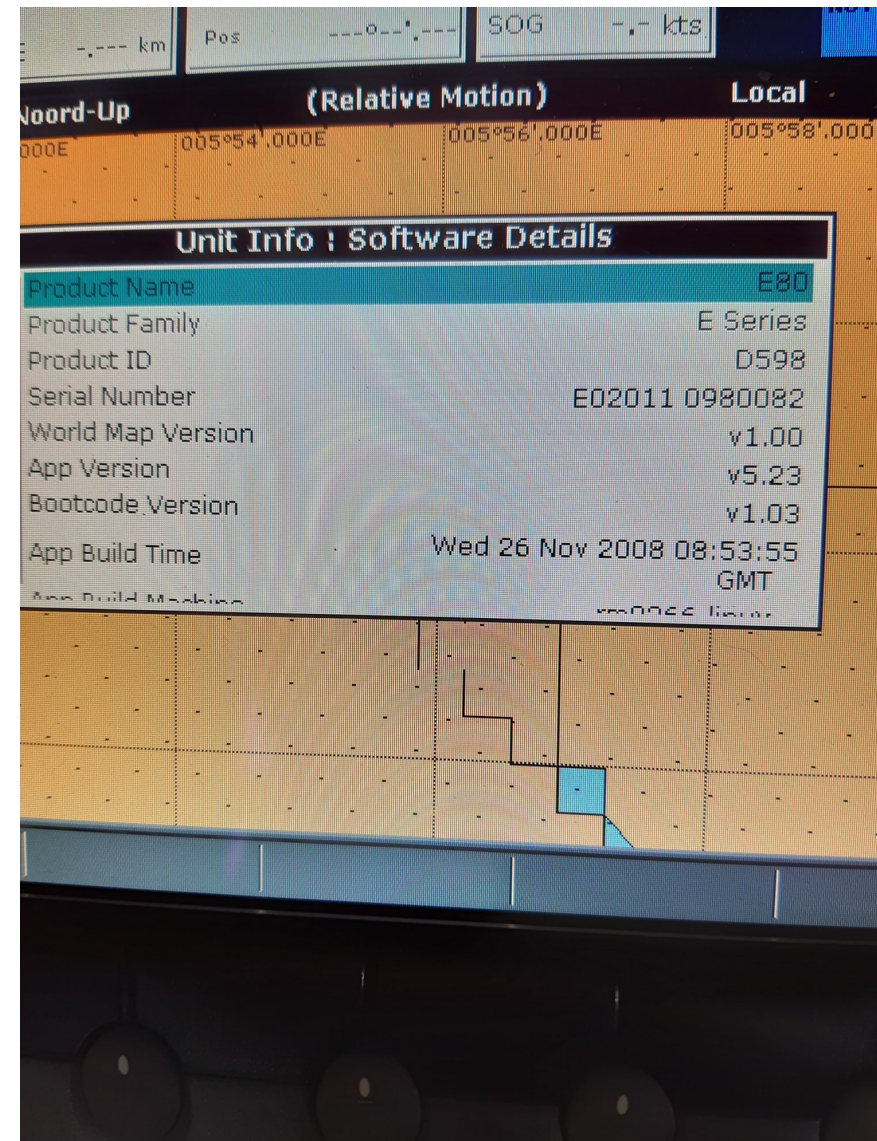
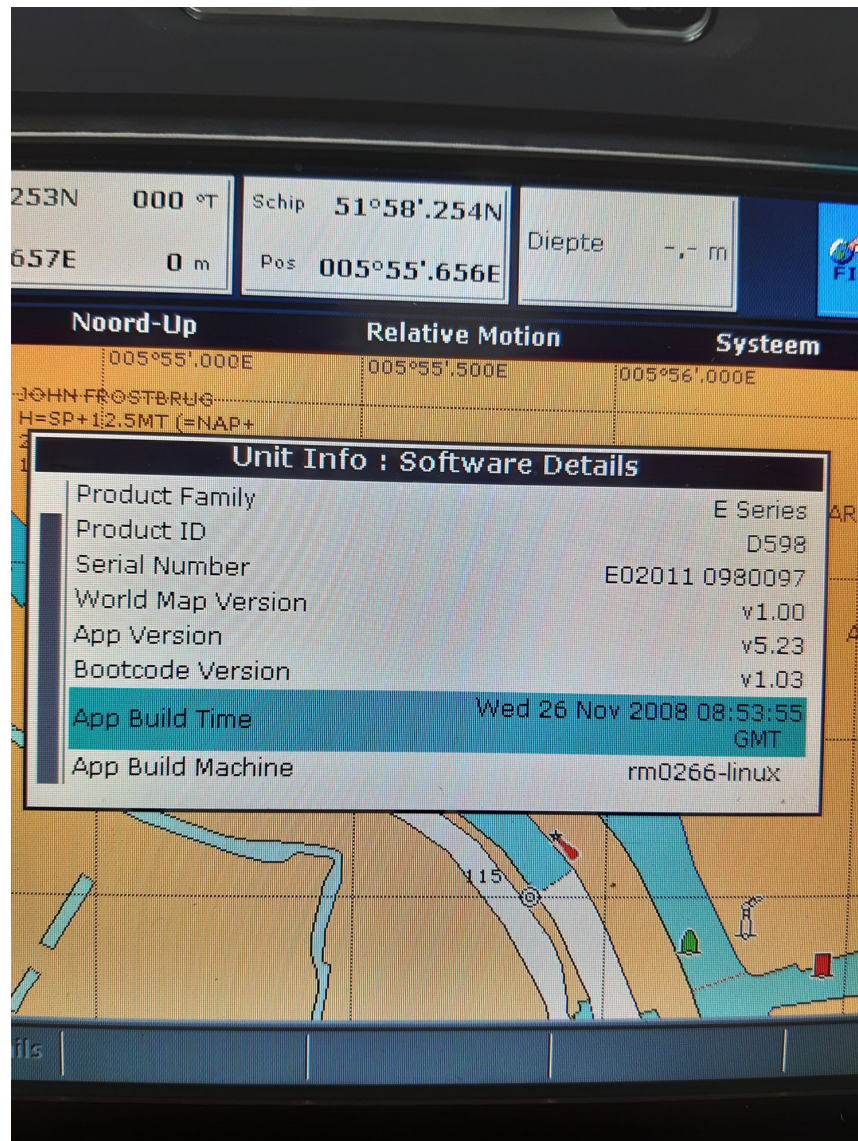


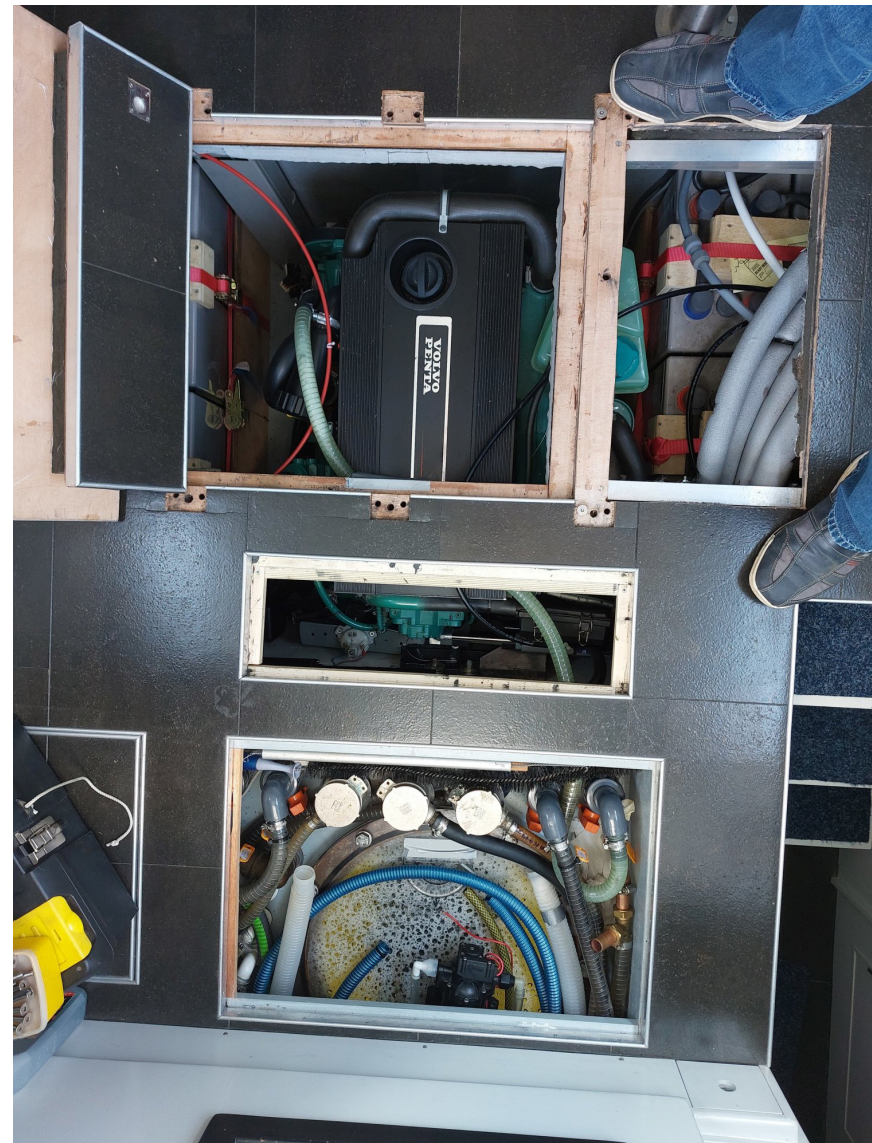


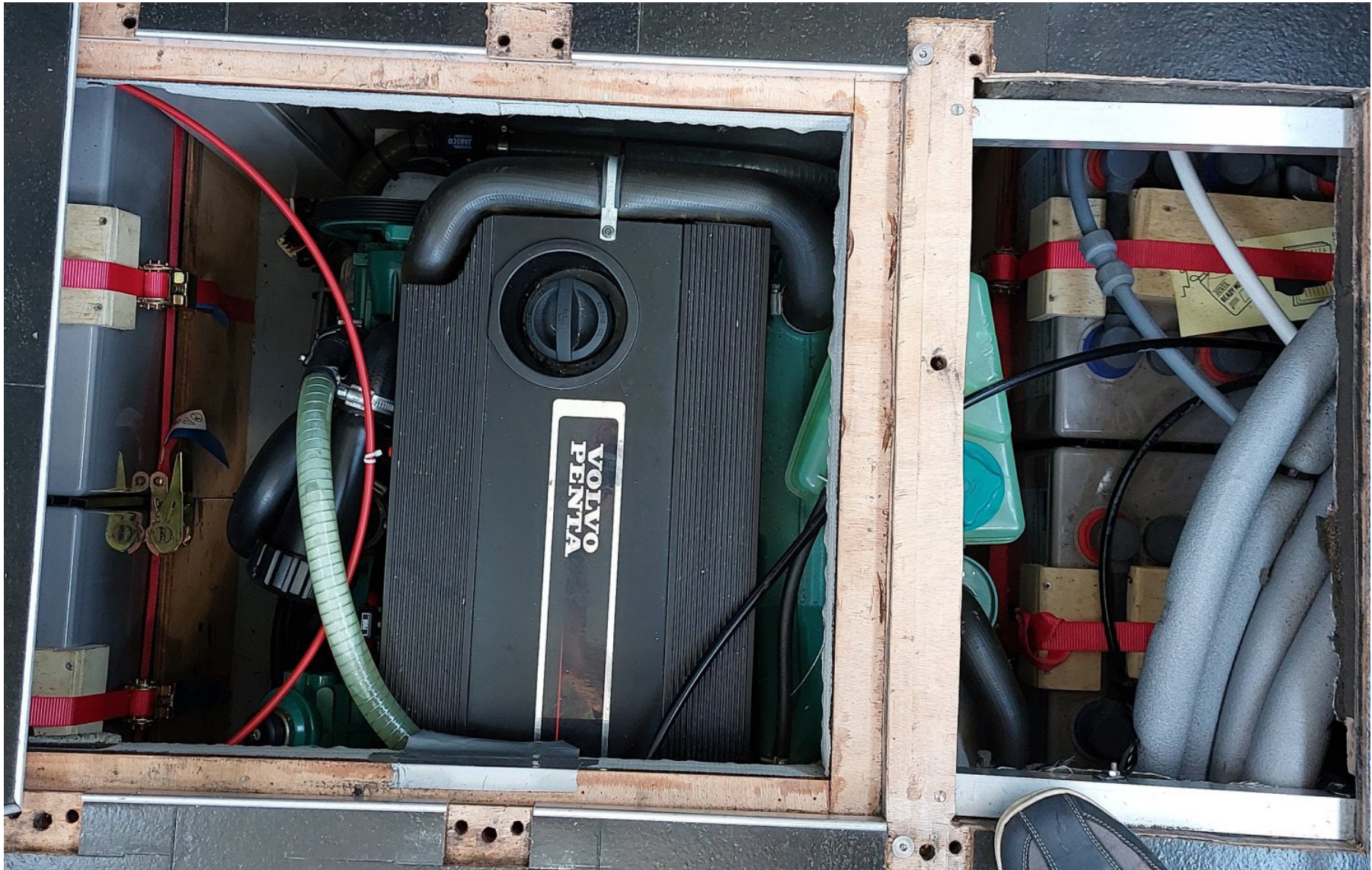










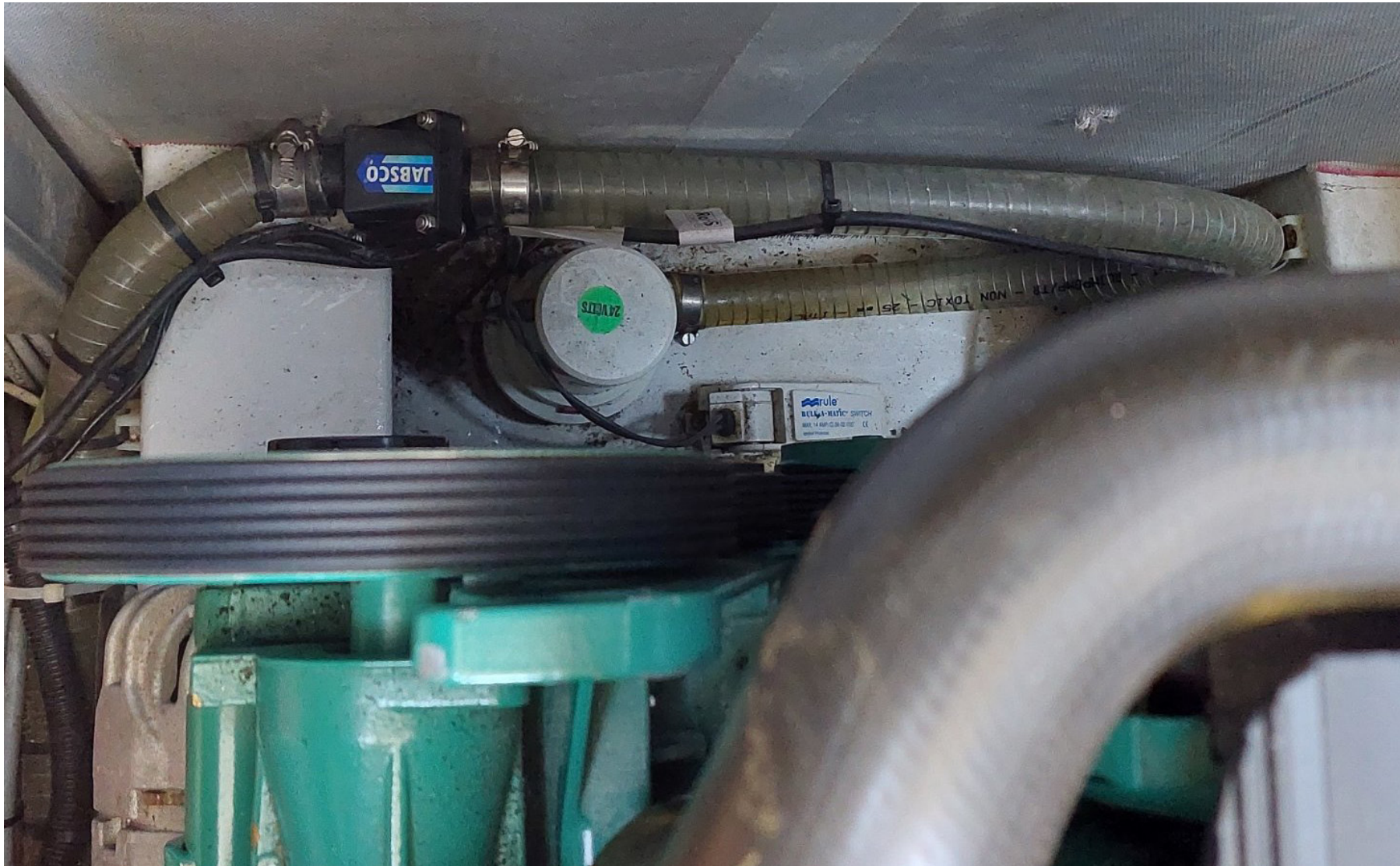






















EC Type Examination Certificate

Germanischer Lloyd

This is to certify that the propulsion engines covered by the below mentioned engine family complies with the mission limits of the Recreational Craft Directive 94/25/EC, last amended by Directive 2003/44/EC.

Certificate No.: 31036-05 HH

Manufacturer: AB Volvo Penta
Gropegårdsgatan
40508 Gothenburg
Sweden

Description: 4-stroke diesel inboard engine without integral exhaust
4-stroke diesel stern drive engine with integral exhaust

Engine family: D3 (engine types according to the annex of this certificate)

Parent engine: D3-190

Module: B - "EC Type Examination" according to annex VII of the Directive

Basis of examination:

- Exhaust emission measurement of the selected Parent Engine in accordance with ISO 8178-1:1996.
- Verification of the relevant technical documentation submitted by the engine manufacturer.

Results of examination: The engine family described above meets the essential requirements for exhaust emissions from propulsion engines of Directive 94/25/EC, last amended by 2003/44/EC, annex I, part B regarding:

- I. B. 1. Engine identification
- I. B. 2. Exhaust emission requirements
- I. B. 3. Durability
- I. B. 4. Owners manual

Gothenburg, 2005-12-09

Germanischer Lloyd

J-Certification for Recreational Craft

Code-No. 0098

Head of Certification Body

(D. Brügge)



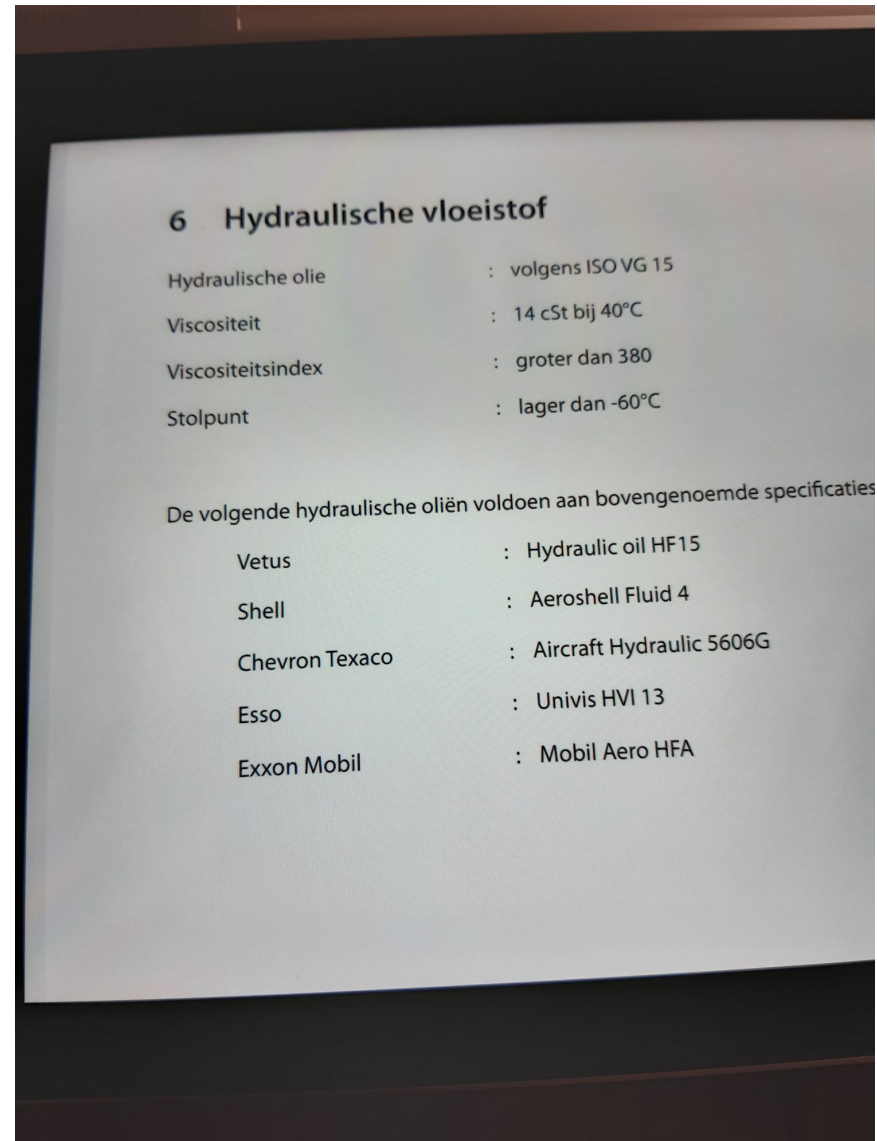
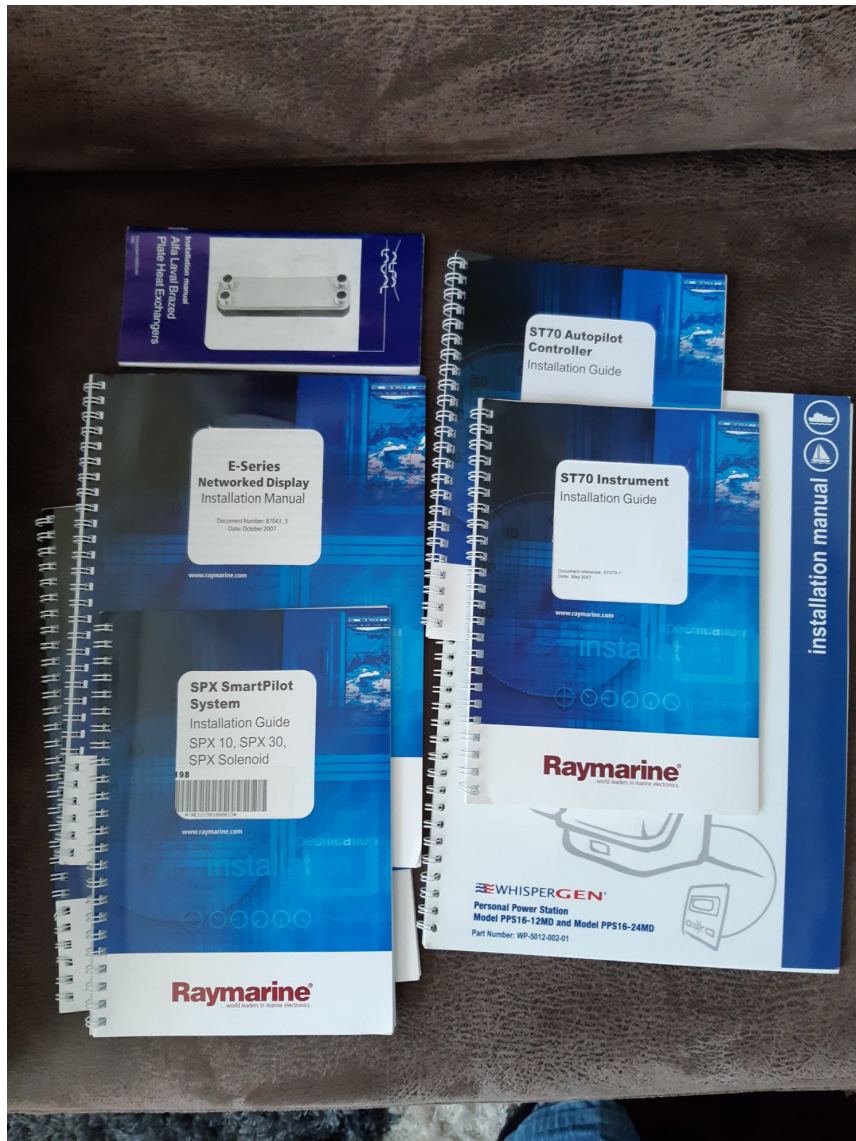


Figure: Sail-Drive fixed

Article no.	Type	Continuous power Consumption	Continuous power Output	Voltage	Current	Total efficiency	Weight	up to boat weight Sailing boat	up to boat weight Powerboat
130094	SDK 2,5 AC	3,1 kW	2,5 kW	24 V	130 A	80 %	45 kg	2,5 t	1,0 t
130099	SDK 3,5 AC	4,1 kW	3,5 kW	36 V	115 A	85 %	45 kg	3,5 t	1,4 t
	SDK 4,0 AC	4,7 kW	4,0 kW	24 V	196 A	85 %	45 kg	4,0 t	1,6 t
105682	SDK 4,3 AC	5,0 kW	4,3 kW	48 V	104 A	85 %	45 kg	4,3 t	1,7 t
141156	SDK 6,0 AC	7,1 kW	6,0 kW	48 V	148 A	85 %	45 kg	6,0 t	2,4 t
138981	SDKH 8,0 AC	9,4 kW	8,0 kW	48 V	196 A	85 %	80 kg	8,0 t	3,2 t
140393	SDKH 10,0 AC	11,8 kW	10,0 kW	48 V	246 A	85 %	91 kg	10,0 t	4,0 t
139192	SDKH 15,0 AC	17,1 kW	15,0 kW	96 V	178 A	88 %	91 kg	15,0 t	6,0 t
water cooled									
	SDKH 15,0 AC	17,7 kW	15,0 kW	48 V	370 A	85 %	91 kg	15,0 t	6,0 t
139819	SDKH 20,0 AC	22,8 kW	20,0 kW	96 V	237 A	88 %	101 kg	20,0 t	8,0 t
140380	SDKH 25,0 AC	28,4 kW	25,0 kW	96 V	296 A	88 %	101 kg	25,0 t	10,0 t
	SDKH 30,0 AC	34,1 kW	30,0 kW	144 V	237 A	88 %	104 kg	30,0 t	12,0 t
possible option									
SDK unlimited for seawater = SDKS									
103420	GfK-base plate for for SDKH								
000279	Sail-Drive with recuperation								
139898	Control unit KCU 5.7 – 48V for passenger ships with the possibility to connect a camera								
139882	Control unit KCU 5.7 – 96V for passenger ships with the possibility to connect a camera								
141590	Camera for KCU 5.7								
142435	Heat exchanger for 2-circle water cooling								
	Boost function 30% performance increase for 2 minutes								
Attention: The SDK motor is only for short term use in seawater.									
Attention: Water cooled drives are only useable in seawater with 2-circle water cooling.									


Krätler
 Electric Motors

35



3.3.2 hoofdmotor

Uw BOXER 1200 is voorzien van een scheepsdieselmotor, die flexibel is met rubberen trillingdempers. Voor aanwijzingen over het starten en stoppen wij naar de betreffende manual en naar blz. 57. Voor aanwijzingen over controles etc. verwijzen wij u naar het bij deze handleiding gevoegde instructieboekje van de motorfabrikant. Daar staan ook verdere gegevens van de motor vermeld.

BOXER 1200

(in te vullen per schip)

geïnstalleerde motor

merk

Volvo Penta

duoprop

type

D3-190

motorvermogen

140 / 190

kW / PK

brandstofverbruik

ca. 200 - 250

gr/kWh *

kg

koeling

interkoeling koelsysteem met warmtewisselaar
motorsysteem

B O X E R 1 2 0 0

2.1 AFMETINGEN EN GEWICHTEN

BOXER 1200

opm.

lengte romp	11.90	m	= Lh conform ISO 8666
lengte waterlijn	ca. 11.80	m	
breedte max.	2.33	m	
diepgang romp	ca. 0.4	m	leeg schip
kruiphoogte minimaal	ca. 2.30	m	leeg schip
totale hoogte schip	2.69	m	'boxmaat'

afhankelijk van de belading kunnen diepgang en kruiphoogte ca. 10 cm variëren

gewicht (leeg schip)	ca. 4.5	ton	
gewicht vaarklaar	ca. 6	ton	volle belading, volle tanks
drinkwater	300	liter	
dieselolie	542	liter	2 tanks
vuilwater	60	liter	

gegevens op plaatje van de bouwer:

max. aantal personen	6		zie sectie 4.1.2
max. belading	700	kg	zie sectie 4.1
ontwerpcategorie	C		

Möchten Sie die WHYSER live erleben?

Kontaktieren Sie uns und werden Sie Teil
einer exklusiven Welt auf dem Wasser!

Telefon +49 (0) 177 769 036 0

E-Mail info@zfmb.co.uk

Standort Emmerich, Deutschland