
WHYSER 39 HYBRIDE

SOMMAIRE

| | |
|---------------------------|--------------|
| extérieur | page 02 - 09 |
| extérieur - détails | page 10 - 18 |
| intérieur | page 19 - 31 |
| technologie | page 32 - 49 |
| divers | page 50 - 53 |
| contact | page 54 |







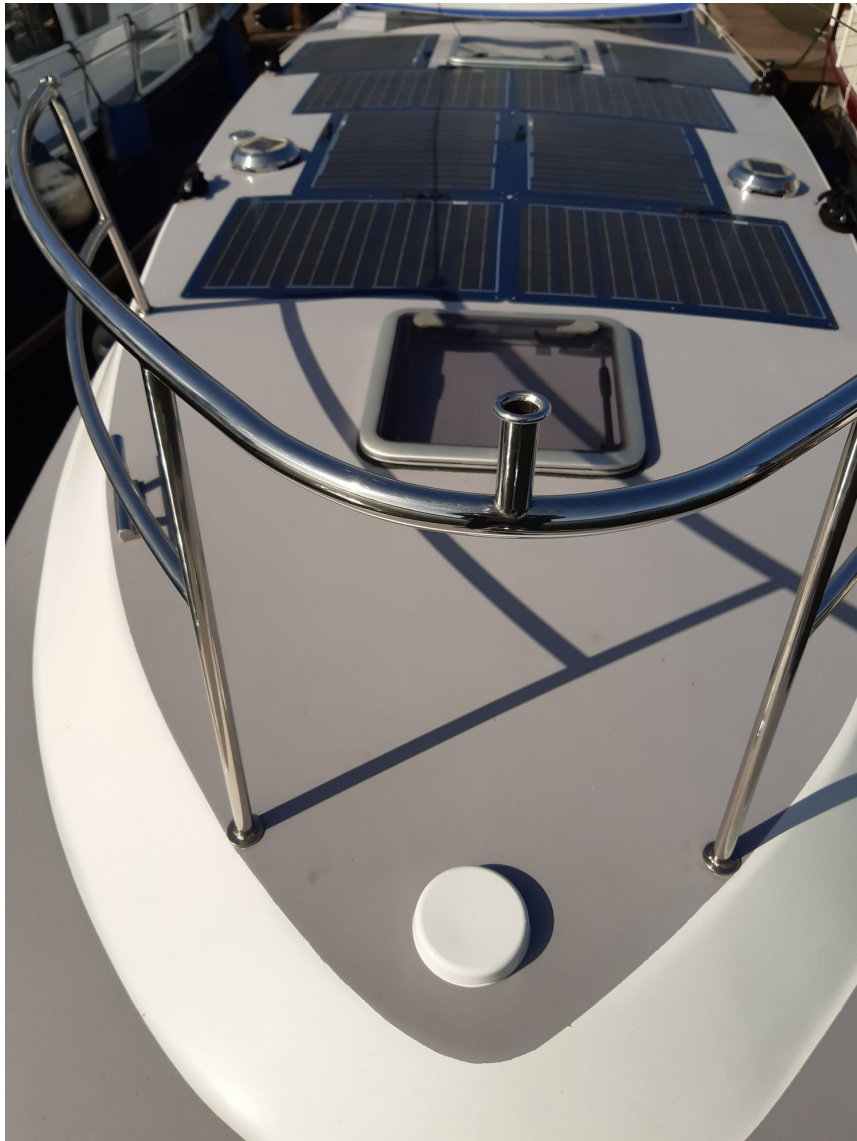








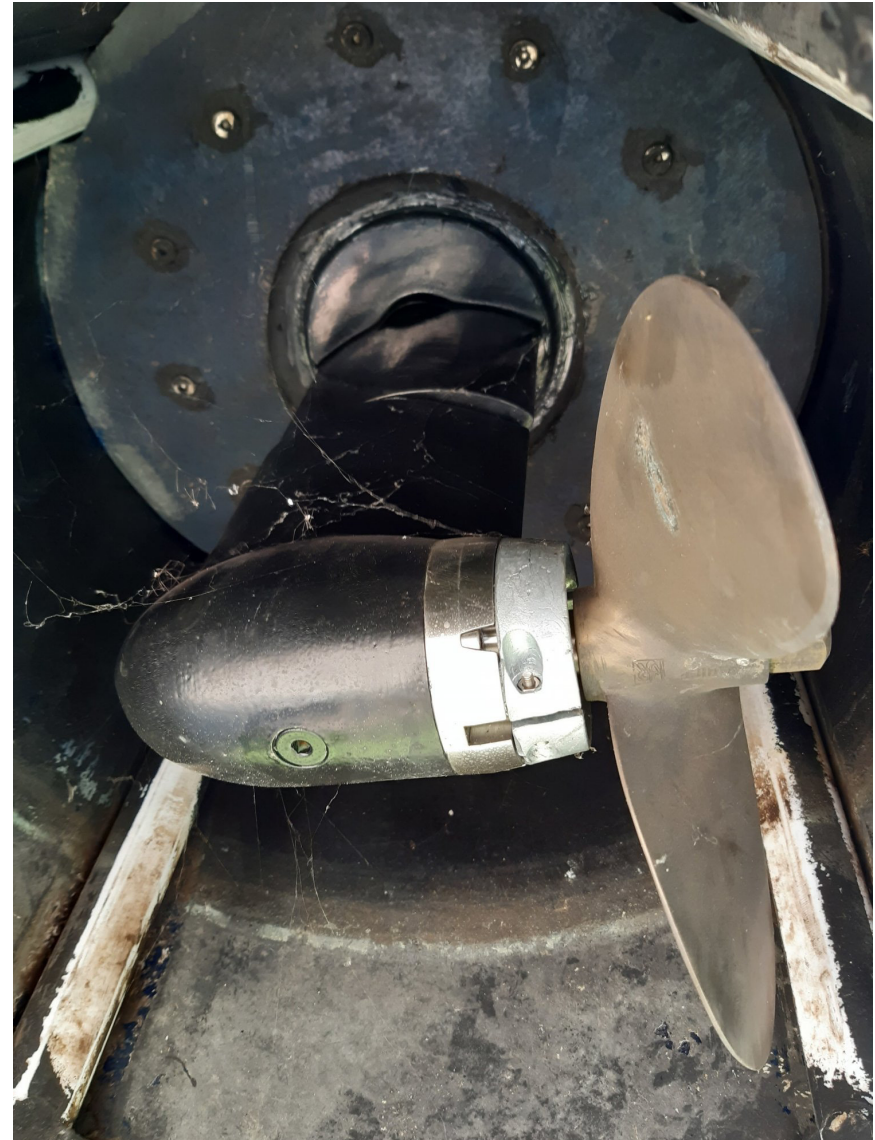














































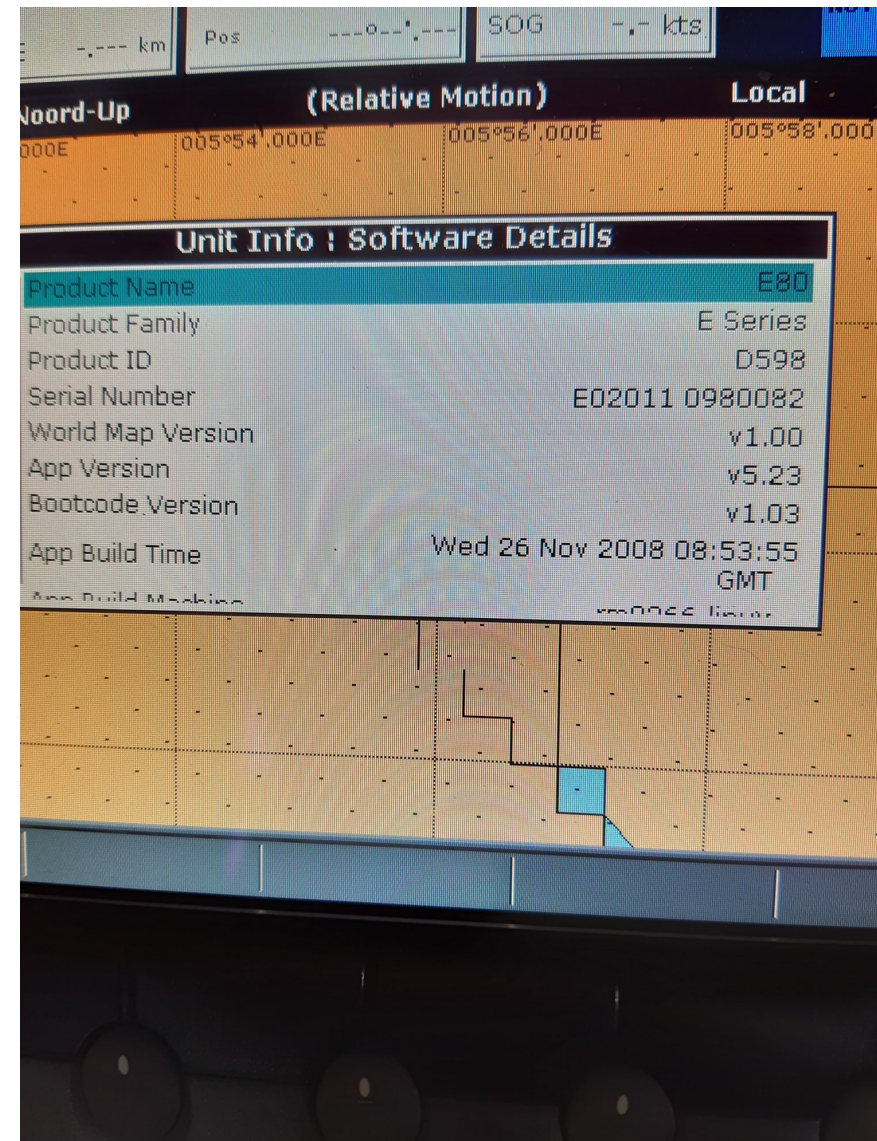
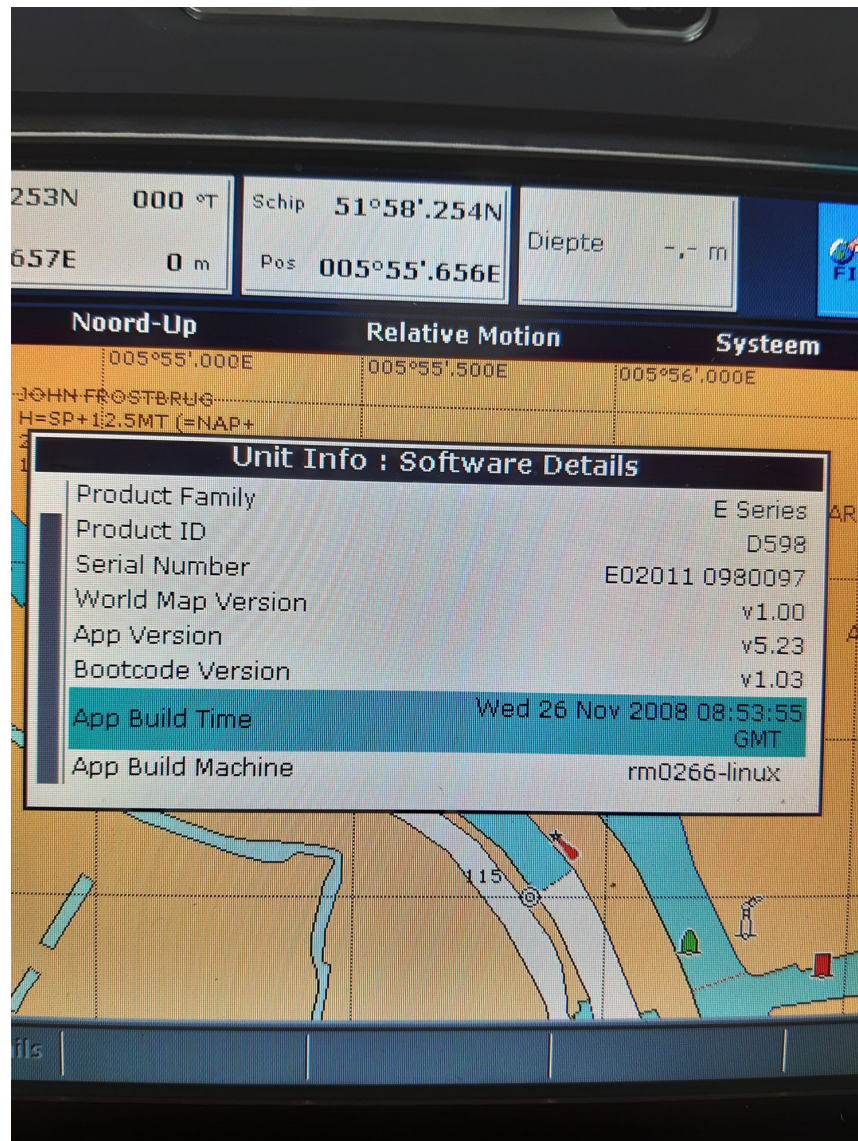


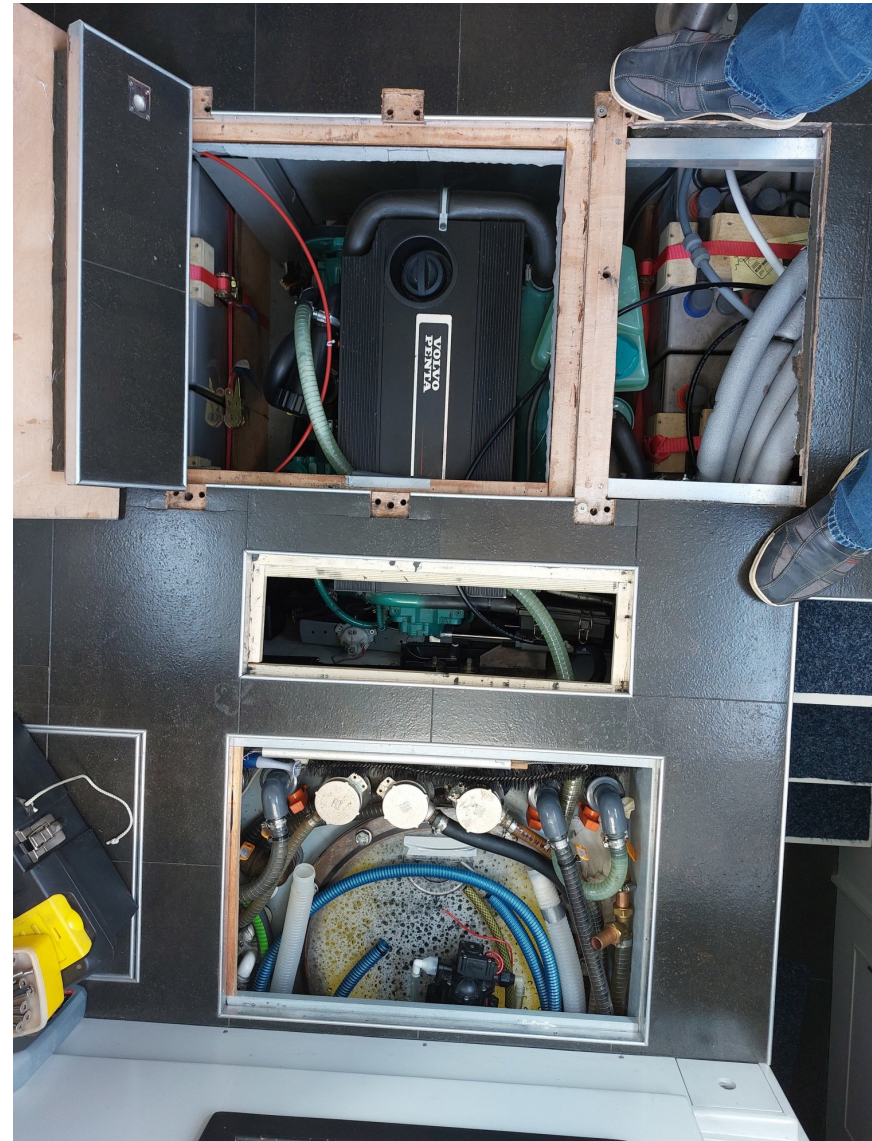


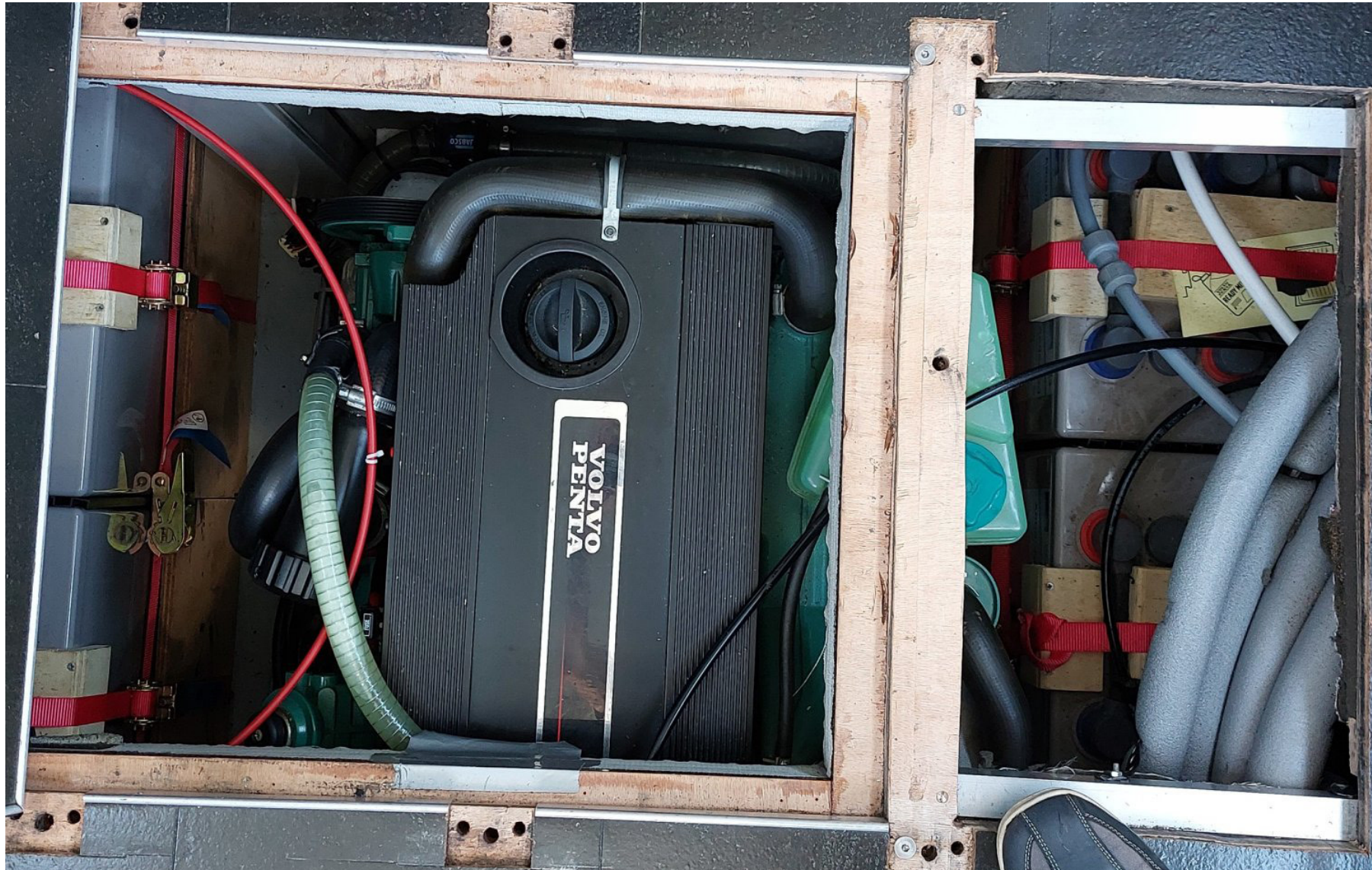










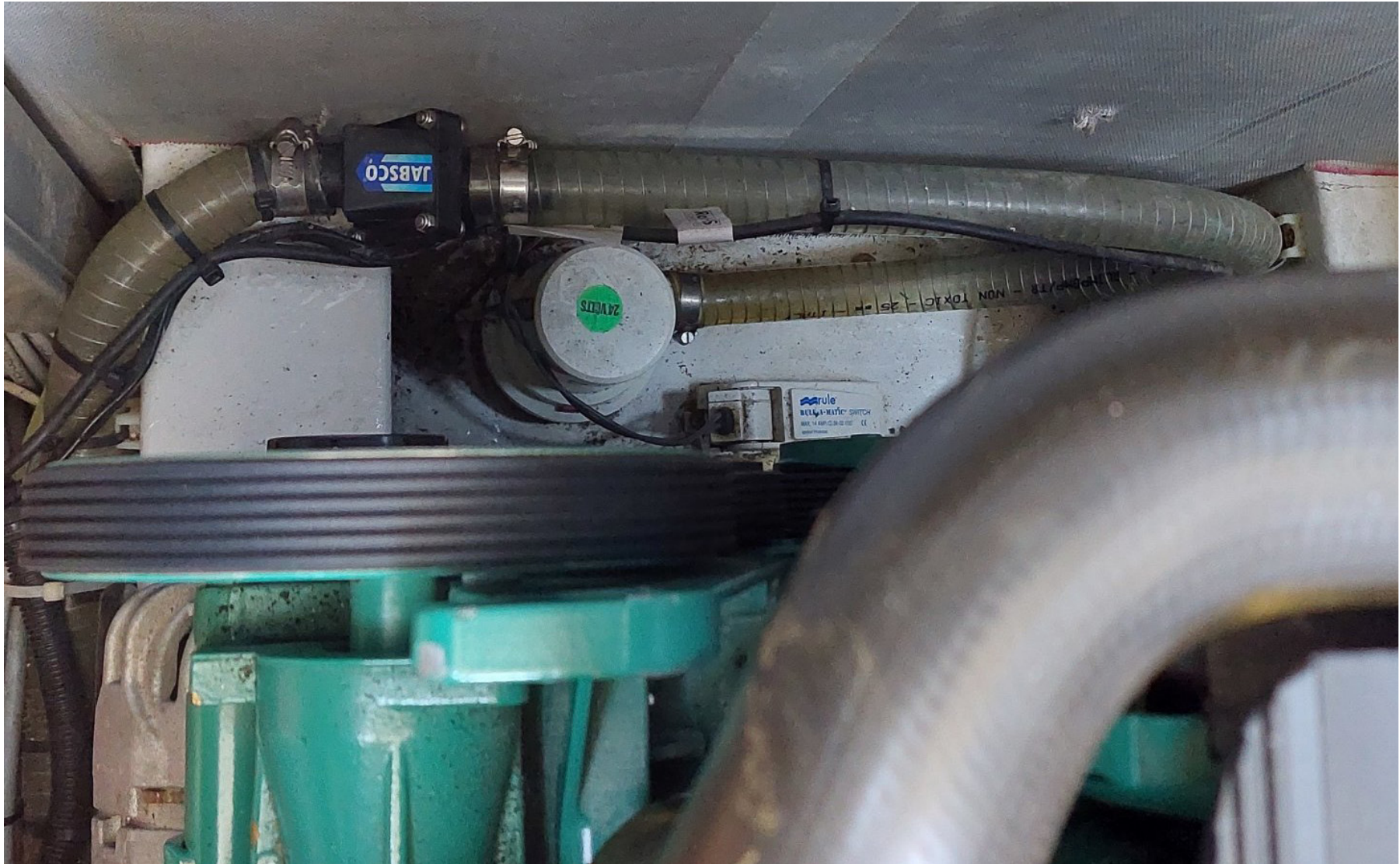






















EC Type Examination Certificate

Germanischer Lloyd

This is to certify that the propulsion engines covered by the below mentioned engine family complies with the mission limits of the Recreational Craft Directive 94/25/EC, last amended by Directive 2003/44/EC.

Certificate No.: 31036-05 HH

Manufacturer: AB Volvo Penta
Gropegårdsgatan
40508 Gothenburg
Sweden

Description: 4-stroke diesel inboard engine without integral exhaust
4-stroke diesel stern drive engine with integral exhaust

Engine family: D3 (engine types according to the annex of this certificate)

Parent engine: D3-190

Module: B - "EC Type Examination" according to annex VII of the Directive

Basis of examination:

- Exhaust emission measurement of the selected Parent Engine in accordance with ISO 8178-1:1996.
- Verification of the relevant technical documentation submitted by the engine manufacturer.

Results of examination: The engine family described above meets the essential requirements for exhaust emissions from propulsion engines of Directive 94/25/EC, last amended by 2003/44/EC, annex I, part B regarding:

- I. B. 1. Engine identification
- I. B. 2. Exhaust emission requirements
- I. B. 3. Durability
- I. B. 4. Owners manual

Gothenburg, 2005-12-09

Germanischer Lloyd

J-Certification for Recreational Craft

Code-No. 0098

Head of Certification Body

(D. Brügge)

Figure: Sail-Drive fixed

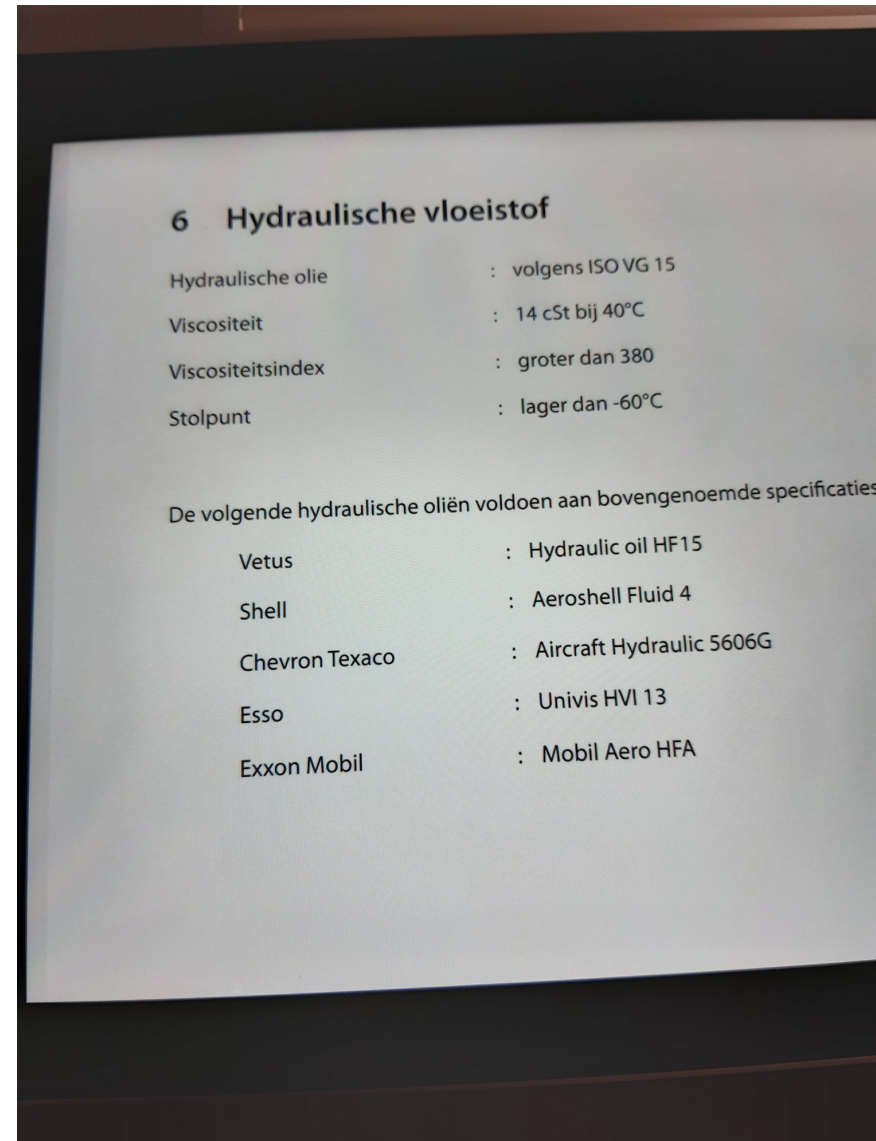
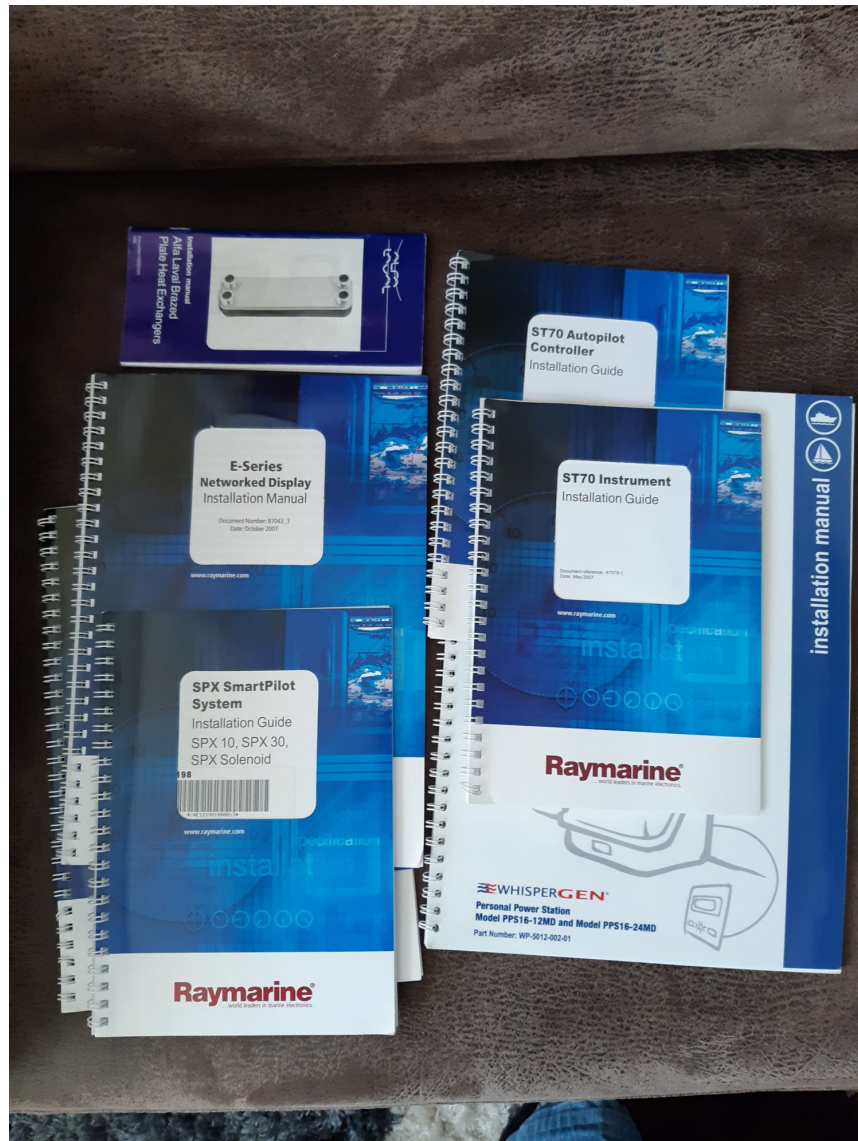
| Article no. | Type | Continuous power Consumption | Output | Voltage | Current | Total efficiency | Weight | up to boat weight Sailing boat | Powerboat |
|-----------------------------------|---|------------------------------|---------|---------|---------|------------------|--------|--------------------------------|-----------|
| 130094 | SDK 2,5 AC | 3,1 kW | 2,5 kW | 24 V | 130 A | 80 % | 45 kg | 2,5 t | 1,0 t |
| 130099 | SDK 3,5 AC | 4,1 kW | 3,5 kW | 36 V | 115 A | 85 % | 45 kg | 3,5 t | 1,4 t |
| | SDK 4,0 AC | 4,7 kW | 4,0 kW | 24 V | 196 A | 85 % | 45 kg | 4,0 t | 1,6 t |
| 105682 | SDK 4,3 AC | 5,0 kW | 4,3 kW | 48 V | 104 A | 85 % | 45 kg | 4,3 t | 1,7 t |
| 141156 | SDK 6,0 AC | 7,1 kW | 6,0 kW | 48 V | 148 A | 85 % | 45 kg | 6,0 t | 2,4 t |
| 138981 | SDKH 8,0 AC | 9,4 kW | 8,0 kW | 48 V | 196 A | 85 % | 80 kg | 8,0 t | 3,2 t |
| 140393 | SDKH 10,0 AC | 11,8 kW | 10,0 kW | 48 V | 246 A | 85 % | 91 kg | 10,0 t | 4,0 t |
| 139192 | SDKH 15,0 AC | 17,1 kW | 15,0 kW | 96 V | 178 A | 88 % | 91 kg | 15,0 t | 6,0 t |
| water cooled | | | | | | | | | |
| | SDKH 15,0 AC | 17,7 kW | 15,0 kW | 48 V | 370 A | 85 % | 91 kg | 15,0 t | 6,0 t |
| 139819 | SDKH 20,0 AC | 22,8 kW | 20,0 kW | 96 V | 237 A | 88 % | 101 kg | 20,0 t | 8,0 t |
| 140380 | SDKH 25,0 AC | 28,4 kW | 25,0 kW | 96 V | 296 A | 88 % | 101 kg | 25,0 t | 10,0 t |
| | SDKH 30,0 AC | 34,1 kW | 30,0 kW | 144 V | 237 A | 88 % | 104 kg | 30,0 t | 12,0 t |
| possible option | | | | | | | | | |
| SDK unlimited for seawater = SDKS | | | | | | | | | |
| 103420 | GFK-base plate for for SDKH | | | | | | | | |
| 000279 | Sail-Drive with recuperation | | | | | | | | |
| 139898 | Control unit KCU 5.7 – 48V for passenger ships with the possibility to connect a camera | | | | | | | | |
| 139882 | Control unit KCU 5.7 – 96V for passenger ships with the possibility to connect a camera | | | | | | | | |
| 141590 | Camera for KCU 5.7 | | | | | | | | |
| 142435 | Heat exchanger for 2-circle water cooling | | | | | | | | |
| | Boost function 30% performance increase for 2 minutes | | | | | | | | |

Attention: The SDK motor is only for short term use in seawater.

Attention: Water cooled drives are only useable in seawater with 2-circle water cooling.

Krätler
Electric Motors

35



3.3.2 hoofdmotor

Uw BOXER 1200 is voorzien van een scheepsdieselmotor, die flexibel is uitgerust met rubberen trillingdempers. Voor aanwijzingen over het starten en stoppen wij naar de betreffende manual en naar blz. 57. Voor aanwijzingen over controles etc. verwijzen wij u naar het bij deze handleiding gevoegde instructieboekje van de motorfabrikant. Daar staan ook verdere gegevens van de motor vermeld.

BOXER 1200

(in te vullen per schip)

geïnstalleerde motor

merk

Volvo Penta

duoprop

type

D3-190

motorvermogen

140 / 190

kW / PK

brandstofverbruik

ca. 200 - 250

gr/kWh *

kr

koeling

interkoeling koelsysteem met warmtewisselaar
motorsysteem

B O X E R 1 2 0 0

2.1 AFMETINGEN EN GEWICHTEN

BOXER 1200

opm.

| | | | |
|----------------------|-----------|---|-----------------------|
| lengte romp | 11.90 | m | = Lh conform ISO 8666 |
| lengte waterlijn | ca. 11.80 | m | |
| breedte max. | 2.33 | m | |
| diepgang romp | ca. 0.4 | m | leeg schip |
| kruiphoogte minimaal | ca. 2.30 | m | leeg schip |
| totale hoogte schip | 2.69 | m | 'boxmaat' |

afhankelijk van de belading kunnen diepgang en kruiphoogte ca. 10 cm variëren

| | | | |
|----------------------|---------|-------|-----------------------------|
| gewicht (leeg schip) | ca. 4.5 | ton | |
| gewicht vaarklaar | ca. 6 | ton | volle belading, volle tanks |
| drinkwater | 300 | liter | |
| dieselolie | 542 | liter | 2 tanks |
| vuilwater | 60 | liter | |

gegevens op plaatje van de bouwer:

| | | | |
|----------------------|-----|----|------------------|
| max. aantal personen | 6 | | zie sectie 4.1.2 |
| max. belading | 700 | kg | zie sectie 4.1 |
| ontwerpcategorie | C | | |

Vous souhaitez découvrir le WHYSER en personne ?

Contactez-nous et devenez partie intégrante
d'un univers exclusif sur l'eau.

| | |
|-----------|-----------------------|
| Téléphone | +49 (0) 177 769 036 0 |
|-----------|-----------------------|

| | |
|--------|--|
| E-mail | info@zfmb.co.uk |
|--------|--|

| | |
|-------------|---------------------|
| Emplacement | Emmerich, Allemagne |
|-------------|---------------------|